

Where to Place Natural Gas Alarms

Why It Matters

Gas rises – placing alarms correctly ensures they provide the earliest warning possible.

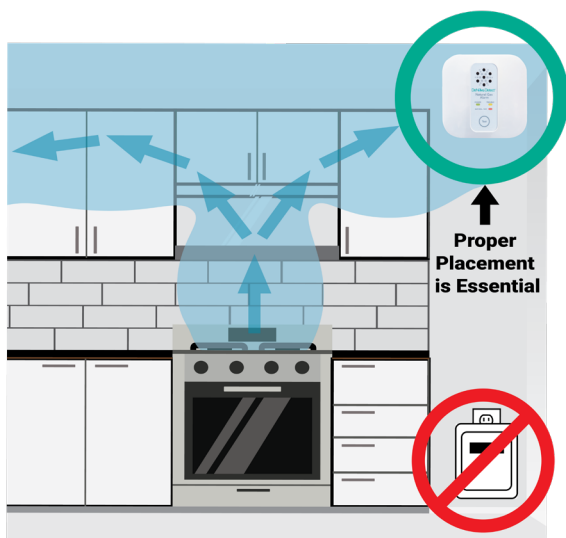
Best Locations for Alarms:

Near each natural gas appliance (furnace, water heater, stove, dryer, fireplace).

In utility rooms, kitchens, and areas where appliances are located.

On or near the ceiling or high on the wall, since natural gas rises.

In sleeping areas for night-time protection



Where NOT to Place Alarms:

- Inside bathrooms (steam may interfere).
- Near open windows or fans (airflow may dilute gas concentration).
- Directly next to gas appliances (to avoid nuisance alarms).



Shared Responsibility Tip:

Think of alarms like smoke and CO detectors – one may not be enough. Install alarms in multiple key areas for full-home protection.